



Farmstead Inn & Conference Center

GROUPS & CONFERENCES



Welcome!

We are delighted with your interest in Shipshewana, Indiana's Farmstead Inn & Conference Center and other event facilities. From retreats, shows, meetings & conferences, to weddings, expos or reunions, you will find the perfect event setting at Shipshewana Trading Place.

Our beautiful facilities can accommodate groups of any size, and our seasoned staff will provide exceptional service and Amish country hospitality. We provide ample bus parking, luggage service, and assistance in coordinating local tours.

Come fall under the spell of one of the most charming Inns in Indiana, enhanced by rural landscape and right across the street from the Midwest's Largest Flea Market and Auction.

The following is a summary of our services. Like what you see? Schedule a preview stay to experience the Farmstead for yourself. Our event & conference planner will be happy to assist you in any way. If you have any questions, call us at 260-768-4595.

Thank you. We look forward to hosting your special event.

Keith Lambright & Family
& the Entire Shipshewana Trading Place Team



Farmstead Inn & Conference Center

PO Box 185
370 S Van Buren St
Shipshewana, Indiana 46565
www.farmsteadinn.com



Contact us to begin planning!

Farmstead Group & Conference Team Members

Phone: 260-768-4595

Email: groups@farmsteadinn.com



Hannah Siegel
Farmstead Inn Manager



Andrea Boval
Event & Conference Planner

Reasons to bring your group to the Farmstead Inn:

- Personalized Group Service by our Event & Conference Planner
- Beautiful Amish Country Location & Views
- Closest Hotel to Downtown Shipshewana Shopping, Events, Midwest's Largest Flea Market (Seasonal) & Year-Round Antique Auction
- Ample Bus Parking
- Luggage Service Available
- Group-Friendly Rates
- Exceptionally Clean Facilities & Rooms
- Full Hot Breakfast Buffet
- Friendly Guest Relations Staff to Assist You
- Welcome Bags (Deals, Coupons & More!)

Find your way to Amish Country

Directions from the I-80/90 Tollroad:

Exit 107: South (Right) on SR 13 to SR 120, East (Left) on SR 120 to SR 5, South (Right) on SR 5, 3.5 miles.

Exit 121: South (Right) on SR 9 to SR 120, West (Right) on SR 120 to SR 5, South (Left) on SR 5, 3.5 miles.

Distance to Shipshewana from:

Grand Rapids: 100 miles

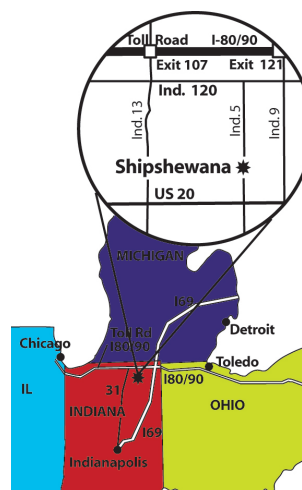
Indianapolis: 180 miles

Chicago: 130 miles

Detroit: 180 miles

Toledo: 130 miles

Toronto: 430 miles



GUEST ROOMS



Farmstead Inn & Conference Center

The Farmstead Inn offers a variety of comfy hotel rooms and suites. Enjoy our spacious rooms, pool, hot tub, free hot breakfast buffet and more when you stay at Shipshewana's Farmstead Inn.



Shipshewana's Group-Friendly Lodging

The Farmstead Inn & Conference Center is the closest hotel to the Flea Market, Auction and downtown Shipshewana shopping! Modeled after an Amish home, the Farmstead Inn has 152 guest rooms and a number of meeting rooms.

GROUP LODGING RATES*

Classic Rooms	\$125 - \$174
Grand Rooms	\$145 - \$194
Suites	\$165 - \$214

*Rates are seasonal, and based on double occupancy

BUS GROUP PERKS**

Receive Special Group Rates When you book 10 or More Rooms (plus tax).

**Must mention this offer to receive booking incentives

Amenities

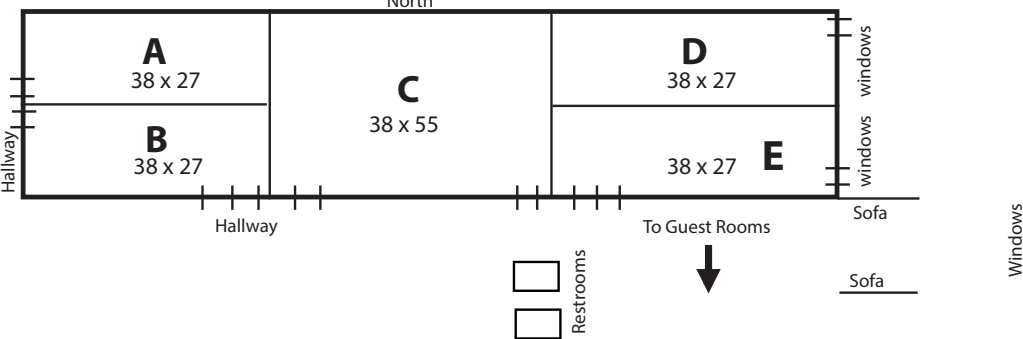
- Free hot breakfast
- Indoor Pool & Hot Tub
- Free WiFi
- In-room fridge, microwave & coffee
- Iron / Ironing Board
- Hair Dryers
- Large Screen TV (DirecTV 130+ Channels)
- Fitness Room
- 1/4 Indoor Basketball Court
- Ping-Pong Table
- Lobbies with Stone Fireplaces
- Luggage Service Available
- On-Site Catering Available

RESERVE ROOMS TODAY!

Ask for Hannah or Andrea
Farmstead Group & Conference Team
Phone: 260-768-4595
eMail: groups@farmsteadinn.com

CONFERENCE CENTER

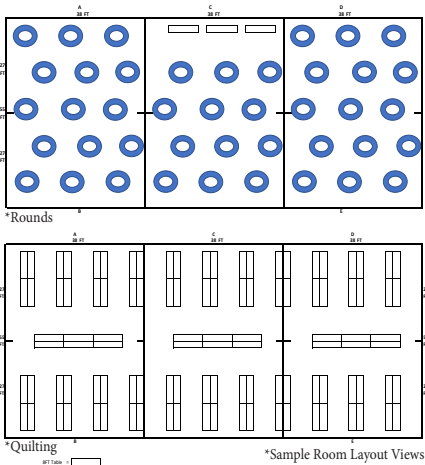
Located within the Farmstead Inn and directly across the street from the Midwest's Largest Flea Market & Auction, the conference center offers large windows and a variety of space set-up options to fit your event.



Meeting Space

With 6,000 square feet of available meeting space, we can accommodate groups from 5 to 500.

	Dimensions	Theatre	Classroom	U-shape	Rounds	Banquet
A,B,D, or E	38 x 27	75	32	24-30	48	48
A&B, D&E, or C	38 x 55	135	90	60	96	96
ABC or CDE	76 x 55	250	150	100	200	208
ABCDE*	114 x 55	500+	250	100	300+	400+
Conf Rm 1	27 x 23	50	24	24	40	48
Conf Rm 2	18.5 x 29.5	40	16	20	32	40
Red Barn Up	47 x 21	60	28	30	56	56



Available Amenities

Tables, Chairs, Wi-Fi, Microphones (2), Stage, Projector, Beverage Services, & Catering Available (Ask for a list of preferred caterers.)
*Additional layout suggestions are available, just inquire with our Group & Conference Team for options to suit your group's needs.



L-R: Andrea Boval, Event & Conference Planner & Hannah Siegel, Farmstead Inn Manager

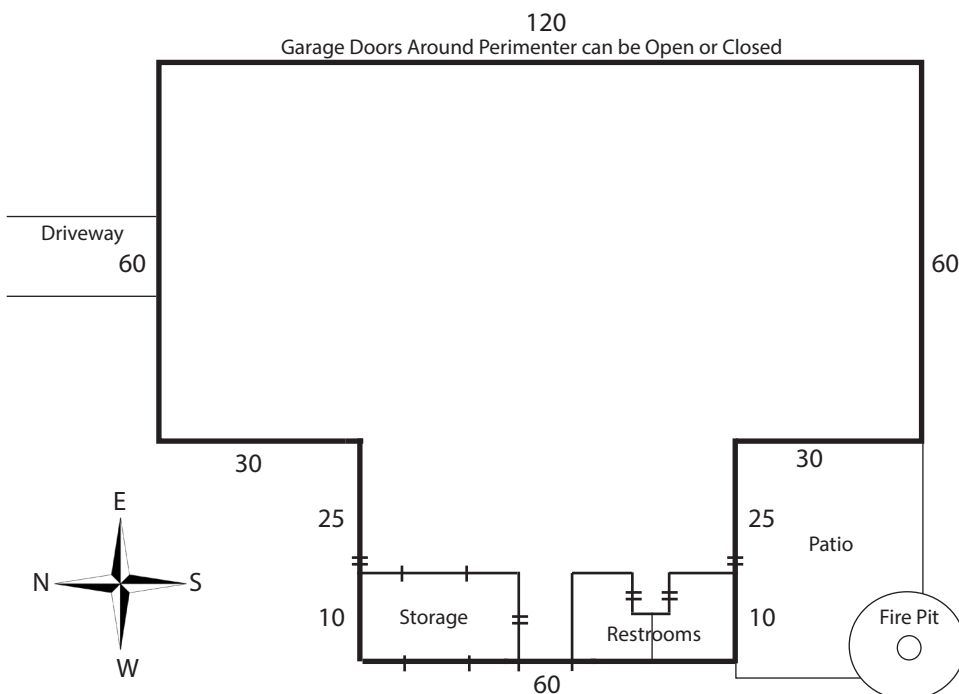
CONTACT US FOR A QUOTE OR SITE VISIT

Contact Hannah or Andrea
Phone: 260-768-4595 (Farmstead Inn)
Email: groups@farmsteadinn.com
Address: 370 S Van Buren St, Shipshewana IN 46565

FARMSTEAD EVENT PAVILION



Gorgeous barn-like venue with beautiful views of the pond, conveniently located next door to the Farmstead Inn. Within walking distance of downtown Shipshewana and area attractions.



Meeting Space

With 9,300 square feet of space, the Farmstead Event Pavilion can house groups up to 1400, depending on set up.

Available Amenities

Indoor Restrooms, Outdoor Patio, Fire Pit, Stage, Tables, Chairs, Electricity, Catering Available (*Ask for a list of preferred caterers.*), Beverage Services, Roll-Up Doors around perimeter that can be closed for inclement weather.



L-R: Andrea Boval, Event & Conference Planner
& Hannah Siegel, Farmstead Inn Manager

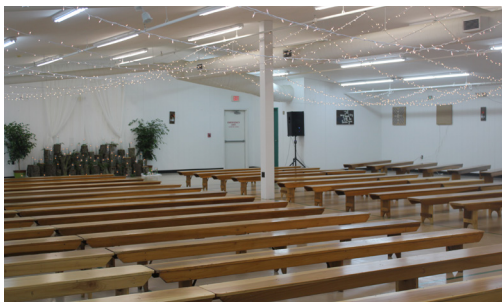
CONTACT US FOR A QUOTE OR SITE VISIT

Contact Hannah or Andrea
Phone: 260-768-4595 (Farmstead Inn)
Email: groups@farmsteadinn.com
Address: 370 S Van Buren St, Shipshewana IN 46565

FARMSTEAD EXPO BARN



Fully-lit, heated, air-conditioned building with loading dock & indoor restrooms. Located next to the Farmstead Inn & Event Pavilion. Beautiful, barn-like exterior, all within walking distance to downtown.




Meeting Space


The Farmstead Expo Barn can accommodate large groups with 30,000 square feet of total space.

Available Amenities

Indoor Restrooms, Stage, Tables, Chairs, Electricity, Catering Available (*Ask for a list of preferred caterers.*), Beverage Services & Wi-Fi.



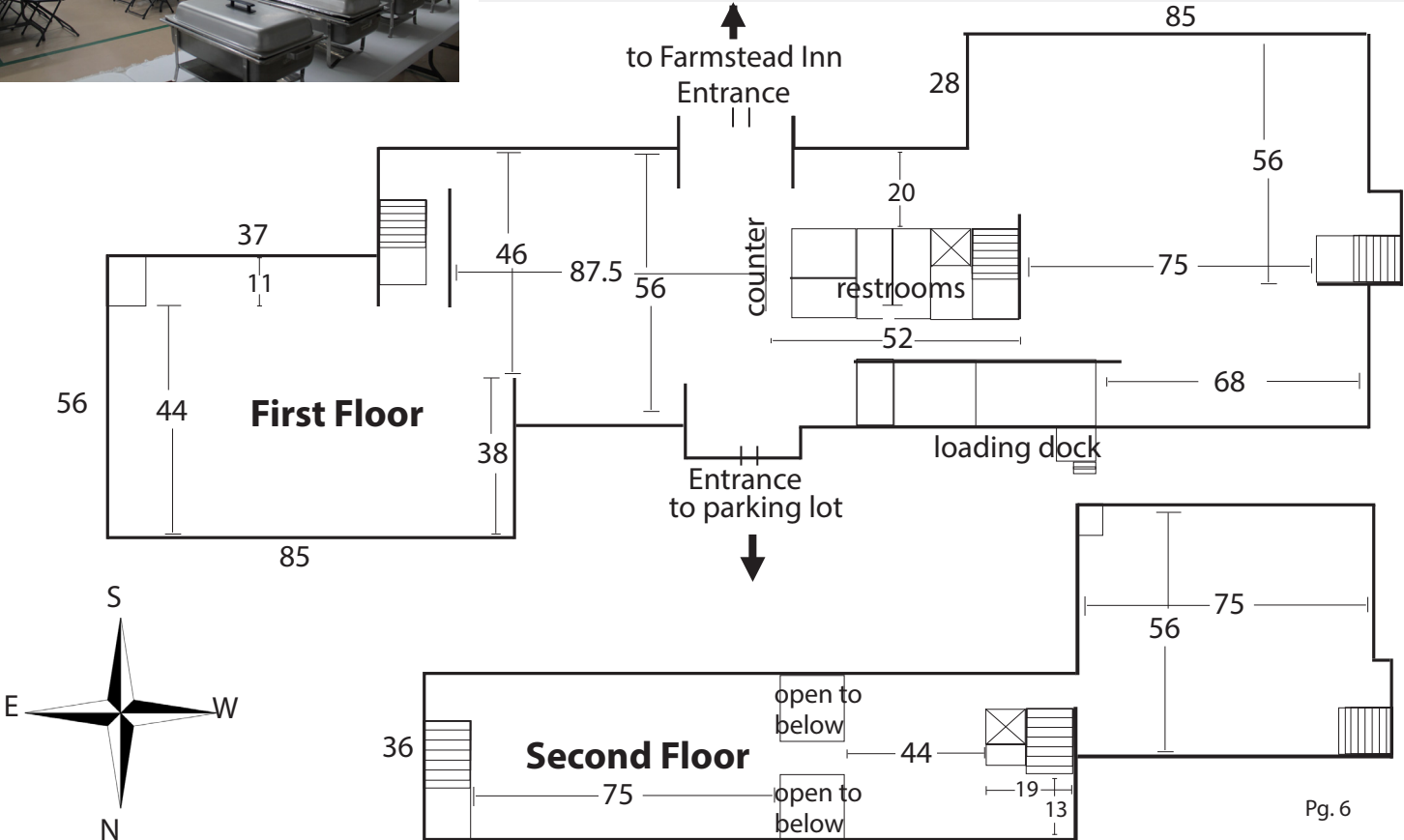
Hannah Siegel
Farmstead Inn Manager



Andrea Boval
Event & Conference Planner

CONTACT US FOR A QUOTE OR SITE VISIT

Contact Hannah or Andrea
Phone: 260-768-4595
Email: groups@farmsteadinn.com
Address: 368 S Van Buren St, Shipshewana IN 46565



SHIPSHEWANA AUCTION MISC. & ANTIQUE BUILDING



Ample space and nice facilities to host an auction, craft or gun show, benefit, horse sale or other event. Located on Shipshewana Auction & Flea Market grounds.



Meeting Space

The Shipshewana Auction Misc. & Antique Building is a 16,000 square feet enclosed and heated building with concrete floor, an auction office, and garage doors for easy unloading. The building can accommodate large groups, auctions and expos. Available Monday, Thursday, Friday, Saturday and Sunday.

Available Amenities

Indoor Restrooms, Snack Bar, Tables, Chairs, Office, Credit Card Machine, Tables, Chairs, Lighted Showcases, Quilt/Peg Racks, Divider Curtain, Clean Up, Trash Pickup, Catering Available (*Ask for a list of preferred caterers.*)

Great Location for...

Benefits, horse sales, gun shows and large meetings.



CONTACT US FOR A QUOTE OR SITE VISIT!

Auction Building Contact Name: Michael Christner

Phone: 260-768-4129 ext 513

Email: michael@shipshewanatradingplace.com

Address: 345 S Van Buren St, Shipshewana IN 46565

SHIPSHEWANA AUCTION RESTAURANT



The Shipshewana Auction Restaurant is located adjacent to the Auction sale barn, serving meals for groups of all kinds. Host your next banquet here.



Meeting Space

The Shipshewana Auction Restaurant can accommodate 30 -100 guests. The restaurant is heated and air-conditioned and has comfortable seating. Available to rent on Mondays, Thursdays, Saturdays and Sundays (plus Tuesdays, October through April)

Food Offerings

This local restaurant specializes in delicious local meals featuring favorites like chicken & noodles, meatloaf, fish, sandwiches and homemade pies. Catering services also available.



SHIPSHEWANA AUCTION RESTAURANT

Restaurant Contact: Stephanie Bontrager

Phone: 260-336-8362

Email: steph.bontrager@shipshewanatradingplace.com

Address: 345 S Van Buren St, Shipshewana IN 46565

CATERING | Shipshewana Auction Restaurant

Catering Services* provided and available for groups of all sizes. We'll serve your group in Amish Country Style!

HOR D'OEUVRES

Serves 30 People

Spinach Dip with Flat Bread: \$75

Relish Tray: \$79

Hummus with Vegetables: \$89

Hummus with Pita Bread: \$69

Cheese & Crackers: \$69

Fruit Tray: \$89

Fruit Kabobs: \$95

BBQ Meatballs: \$69

Chilled Shrimp with Cocktail Sauce: \$120

3 Dozen Cookies: \$40

Chips & Salsa: \$49

3 Dozen Assorted Doughnuts: \$80

BOX LUNCHES

Price per person

Chicken Salad

Chicken salad croissant with chips, fruit, cookie and bottle water. **\$13.99**

BLT Wrap

Bacon, Lettuce, Tomato, and Mayo on a Tortilla Shell. Served with chips, fruit, cookie and bottle water. **\$13.99**

Turkey Club

Mayo, Lettuce, Tomato, Bacon and Turkey served on Toasted Homemade Sourdough.

Served with chips, fruit, cookie and bottle water. **\$14.99**

Pick up orders add 8% sales tax. Pick up order does not include chaffers. Setup and service add 18% service fee and 8% sales tax. Setup will include setting up your meal, serving & cleanup. Delivery is **Free of Charge to the Farmstead Inn & Conference Center. All other deliveries will include a \$1 per mile round-trip delivery fee. Minimum orders for Group Catering is \$200.*



SHIPSHEWANA AUCTION RESTAURANT

Restaurant Contact: Stephanie Bontrager

Phone: 260-336-8362

Email: steph.bontrager@shipshewanatradingplace.com

Address: 345 S Van Buren St, Shipshewana IN 46565



CATERING | Shipshewana Auction Restaurant

Catering Services* provided and available for groups of all sizes. We'll serve your group in Amish Country Style!

LUNCH BUFFET

Price per person

Soup & Salad

Fresh greens with assorted toppings and dressings. Choice of soup (cheesy broccoli, chicken noodle, or creamy potato). Served with homemade rolls and assorted pies. **\$16.99**

Build Your Own Sandwich

Homemade bread, ham & turkey, cheese, lettuce, tomato, and condiments. Served with potato salad and broccoli salad. **\$17.99**

DINNER BUFFET

Price per person

Chicken & Noodle Buffet

Tossed salad, chicken and noodles, homemade mashed potatoes, gravy, green beans, and rolls. Served with assorted pies. **\$17.50**

BBQ Buffet

Pulled bbq pork, buns, potato salad, cole slaw, and baked beans. Served with assorted pies. **\$21**

Full Amish Buffet

Grilled chicken breast, noodles, homemade mashed potatoes, gravy, chicken dressing, green beans, and rolls. Served with assorted pies. **\$23**

Pick up orders add 8% sales tax. Pick up order does not include chaffers. Setup and service add 18% service fee and 8% sales tax. Setup will include setting up your meal, serving & cleanup. Delivery is **Free of Charge to the Farmstead Inn & Conference Center. All other deliveries will include a \$1 per mile round-trip delivery fee. Minimum orders for Group Catering is \$200.*

SHIPSHEWANA AUCTION RESTAURANT

Restaurant Contact: Stephanie Bontrager

Phone: 260-336-8362

Email: steph.bontrager@shipshewanatradingplace.com

Address: 345 S Van Buren St, Shipshewana IN 46565



BEVERAGE SERVICES



We'll be happy to fit your specific event's needs.

BEVERAGE OPTIONS

- Beer: Coors Light, Bud Light, Miller Light
- White Wine: White Chardonnay, Moscato
- Red Wine: Cabernet Sauvignon

OPEN BAR PACKAGE

- Kegs
- Bottles of Wine

CASH BAR PACKAGE

Guests pay for their own drinks at the bar.

SERVICE CHARGE

- All beer and wine packages includes 4 hours of bartender service and security.
- Additional requests may be subject to an additional service charge.

TERMS

- Alcoholic beverages must stay in conference center or event area and are not permitted in Farmstead Inn guest rooms.
- Beverage services are available for use in Farmstead Event Pavilion, Expo Barn and Conference Center A,B,C,D, & E only.



CONTACT



Want more information about renting a facility? Our staff is ready to help!

READY FOR A QUOTE? EMAIL OR CALL US!

THE FOLLOWING INFORMATION IS HELPFUL TO HAVE WHEN QUOTING YOUR EVENT:

Event dates and times:

Event Title / Type:

Venue Interests:

Number of Guests:

Catering Needs:

Special Equipment Needed:

Other Special Requests:

Are you interested in booking guest rooms?



Hannah Siegel
Farmstead Inn Manager

FARMSTEAD CONFERENCE CENTER

Contact Hannah or Andrea

Phone: 260-768-4595

Email: groups@farmsteadinn.com

Address: 370 S Van Buren St, Shipshewana IN 46565

FARMSTEAD EVENT PAVILION

Contact Name: Hannah or Andrea

Phone: 260-768-4595

Email: groups@farmsteadinn.com

Address: 368 S Van Buren St, Shipshewana IN 46565



Andrea Boval
Event & Conference Planner

FARMSTEAD EXPO BARN

Contact Name: Hannah or Andrea

Phone: 260-768-4595

Email: groups@farmsteadinn.com

Address: 368 S Van Buren St, Shipshewana IN 46565



Michael Christner
Flea Market Director

SHIPSHEWANA AUCTION MISC. & ANTIQUE BUILDING

Contact Name: Michael Christner

Phone: 260-768-4129 ext 113 (Shipshewana Trading Place Corporate Office)

Email: michael@shipshewanatradingplace.com

Address: 345 S Van Buren St, Shipshewana IN 46565

SHIPSHEWANA AUCTION RESTAURANT

Restaurant Contact: Stephanie Bontrager

Phone: 260-336-8362

Email: steph.bontrager@shipshewanatradingplace.com

Address: 345 S Van Buren St, Shipshewana IN 46565



Stephanie Bontrager
Restaurant Manager